

GOTHIC DARK ROMANCE



AUTUMN WINTER 27





GOTHIC DARK ROMANCE

Responding to societal upheaval and feelings of **anger and rage**, stylised gothic ornamentation addresses darker emotions and symbolises individuality and rebellion against mainstream culture.

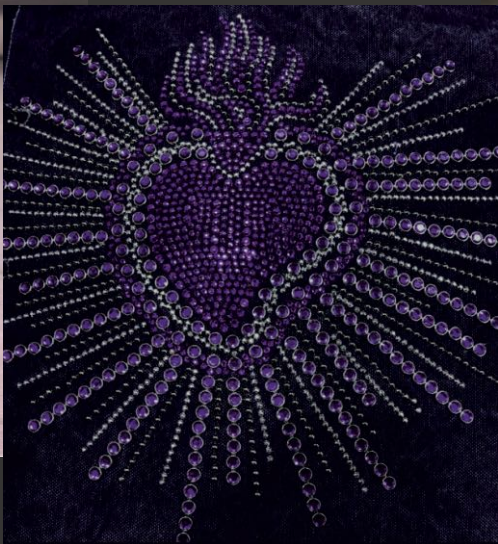
Design strategies

- Experiment with contrasts across materials and details, including light and shadow, soft and sharp, curved and pointed, and perfect and imperfect
- Extend this to include harmonious [#BlackAndWhite](#) colour combinations
- Include sensuous [#Lace](#) and [#Sheers](#) for soft accessories favouring recycled fabrications
- Introduce protective spikes for [Subversive Allure](#) and to complement [Future Armour](#)
- Extend S/S 26's [Enchanted](#) theme and update protective talismans, mystic and tarot designs with gothic, [#DarkRomance](#) storytelling qualities

The concept: delve into discomfoting, subversive material realms with hard, aggressive-looking structures using soft materials or textures adorned in spikes, spines or sharp edges.

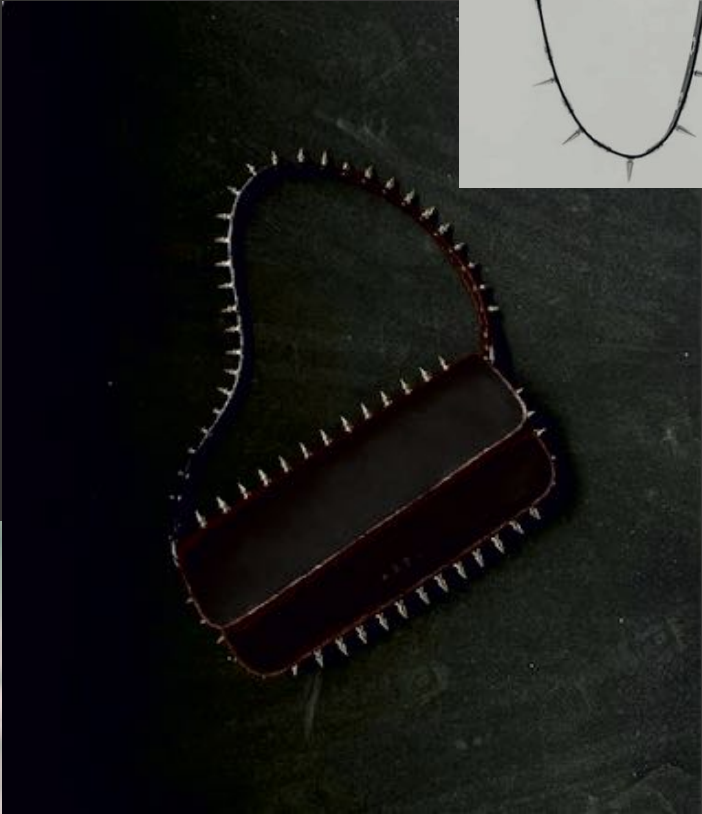
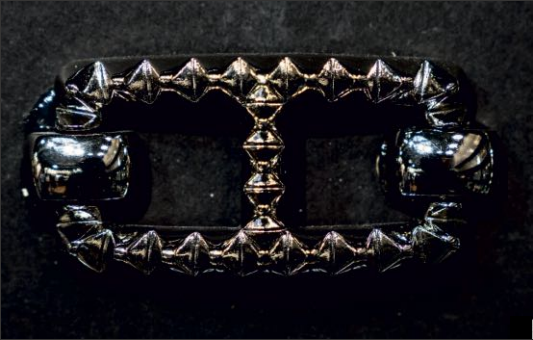
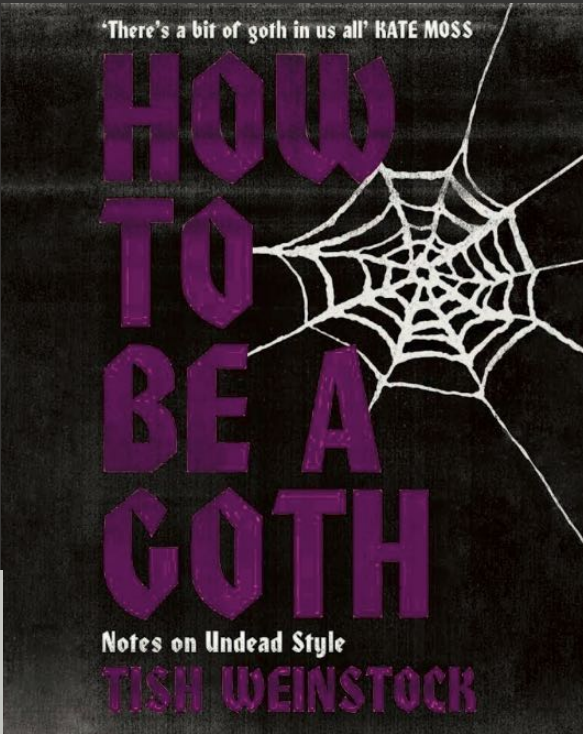
Material and finish: the dark drama of the [Techno Lace](#) theme is evolved by using [3D printing](#) to engineer new structures and experiment with surprisingly hard and soft material contrasts.

How to implement: experiment with tough iron, steel, glass graphene, jet and obsidian stones. Make surfaces tactile with studs and spikes, or take a softer stance with hard looks in malleable recycled rubber, plastic, foam and padded leather.



GOTHIC DARK ROMANCE





- Stylised, gothic-inspired finishes and details gained pace at Lineapelle, evoking a refined #GothLite aesthetic
- Getting ahead of A/W 26/27's Eerie Ornamental story, begin to address the consumer's response to darker emotions with darker textures and finishes that will add interest to all-black colourways
- Focus on distressed leather, patent finishes and #SoftGrunge hardware
- Use for transseasonal collections, incorporate Subversive Allure leather and non-leathers and introduce protective spikes





